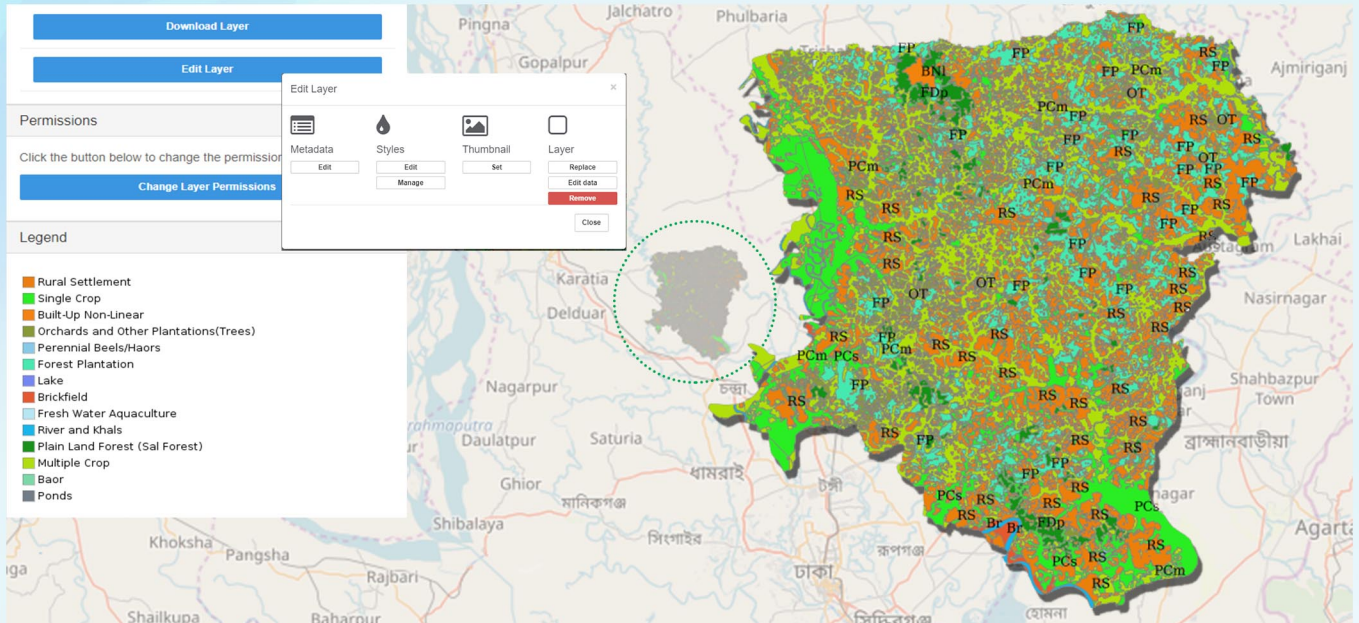




BFIS GeoPortal Module

<http://bfis.bforest.gov.bd/bfis/>



About the BFIS GeoPortal Module:

BFIS GeoPortal module is a national web-based application to access geospatial information about forestry in Bangladesh. Its' interactive tools allow analyzing, creating, sharing and visualizing geospatial data and maps anytime and anywhere without using any specialized mapping software. This platform is compatible with ISO standard LCCS(land cover classification system) for producing consistent and comparable land cover information.

The platform is an open source GeoNode based geospatial information system(GIS) to manage and collect spatial type data.

This module contains:

Terms and conditions: The data and information are made available by the Bangladesh Forest Department under its terms and conditions.

Documentation: All geospatial layers are documented, and metadata is provided.

Online mapping application tools: User can query on available geospatial information, prepare maps and access other maps.

Interoperability functions: User can access information from other open source GeoNode platforms¹.

Upload and explore layer: Geospatial layers such as land cover maps, forest boundaries, tree cover, protected areas can be visualized and uploaded.

Create own map: New maps can be composed by composing multiple layers with custom style.

Semantic Query: Similarity between legend classes of Land Cover Classification System (LCCS) based map and user-defined classes can be assessed.

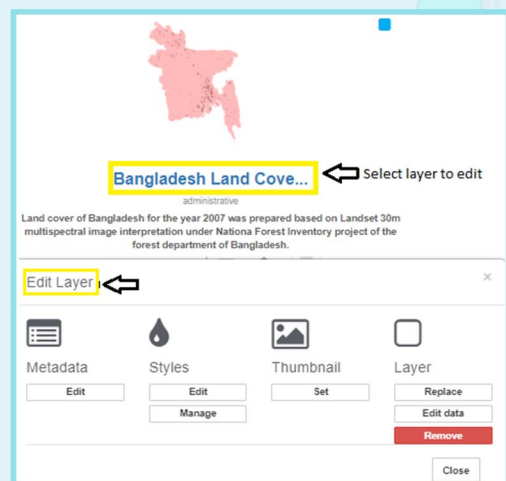
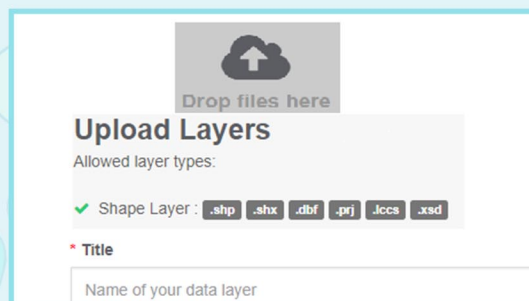
Explore Legend: Schematic diagram of existing land cover classes of layer is provided.

¹ <https://geodash.gov.bd/>



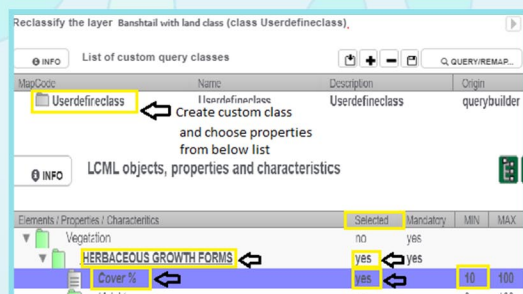
Functionalities:

Upload Layer: There is a user input page to upload allowed layer types with a title, category and set permissions to control the layer accessibility by other users.



Explore Layers: All uploaded layers will appear in explore layer page and by clicking on any layer user can perform further analysis using the tools in “Edit Layer”.

Create custom style map: User can add custom style and set rules with preferred legend color for any attribute of the layer and create map using the style.



Semantic Query: User can define/import land cover classes and can compare with available land cover classes in the layer and reclassify to the most similar ones (user defined or imported). Statistical analysis is for statistical representation of the layer lccs contents to find the number of entities by LCML class, area covered by LCML class.

Highlights:

- This platform is interoperable with GeoNode based platforms for interacting and sharing GIS data.
- This is first ever web-based application with similarity assessment tool for land cover class.
- An ArcGIS plugin is developed to upload large data file in BFIS Geoportal and as well as other type data format such as GeoDB. This feature is a unique enhancement unlike any other GeoNode deployment.

This module was developed by BFD with technical support from the Food and Agriculture Organization of the United Nations with financial support from the UN-REDD Bangladesh National programme and USAID.

Contact

Resource Information Management System (RIMS) Unit

Forest Department/ Ban Bhaban

Plot No: E-8, B-2; Agargong, Sher-E-Bangla Nagar, Dhaka-1207, Bangladesh

Phone: 8181744, E-mail: bfis.rims.fd@gmail.com; Web: bforest.gov.bd



Food and Agriculture
Organization of the
United Nations



USAID
FROM THE AMERICAN PEOPLE

